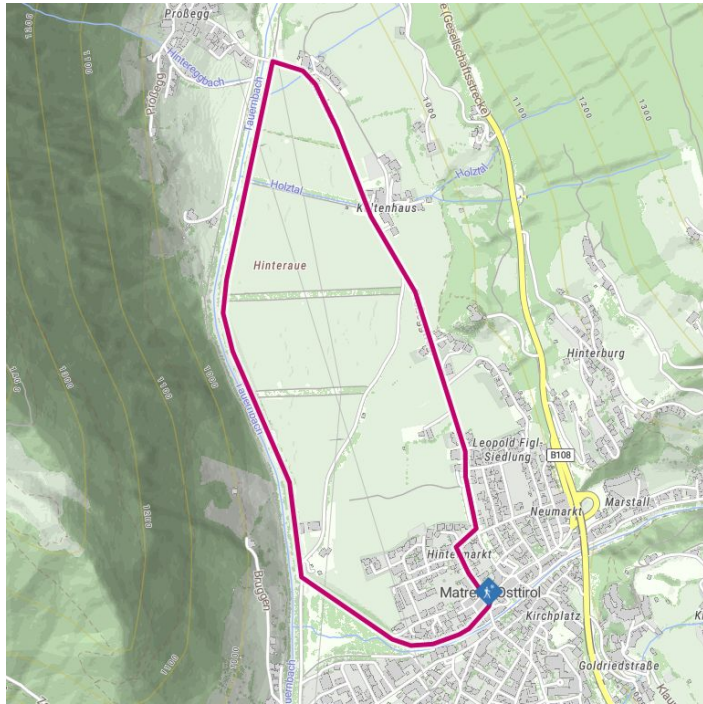
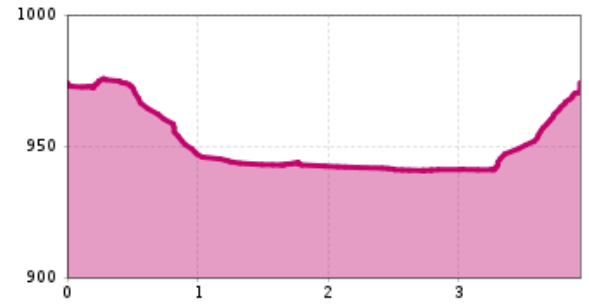


Winter hiking in the National Park Hohe Tauern



Altitude profile



The most important at a glance

distance
3.9 km

altitude meters uphill
35 m

altitude meters downhill
35 m

total walking time
1:10 h

highest point
970 m

difficulty
easy

state:
closed

fitness:



public transport:

951 Matrei i.O. Korberplatz

parking:

starting point:

destination point:

best season:

route typ:

Car park Korberplatz, Car park Kreuzbühel
Tourist information Matrei i. O.
Tourist information Matrei i. O.
JAN, FEB, MAR, DEC
circuit family tour

arrival

Stop

Matrei in Osttirol Korberplatz

Parking spot

Car park Korberplatz 960m

Car park Kreuzbühel 970m

Gpx file

[download>](#)

Interactive map

[open>](#)

Description

The Hinterau circular hiking trail starts at the Matrei i. O. tourist information office and leads to the district of Prosegg. This extensive area is ideal for winter hiking with the family thanks to its flat, large fields. The striking rows of trees (popularly known as "wind belts") in this area protect the surrounding fields from the Tauern wind. The frozen Tauernbach stream reflects the glittering rays of the sun, and the gentle splashing of the water will help you relax.