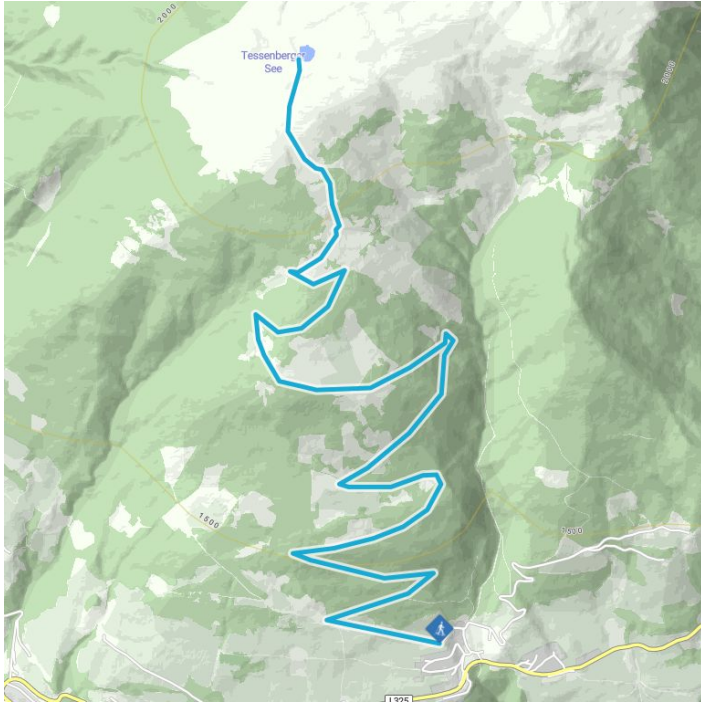


# Tessenberger See from Heinfels



## Altitude profile



## The most important at a glance

distance  
6.2 km

altitude meters uphill  
800 m

walking time uphill  
2 h

highest point  
2126 m

difficulty  
average

fitness:

\* \* \* \* \*

technique:

\* \* \* \* \*

public transport:

Mit dem Bus bis zur Haltestelle "Panzendorf Gemeindeamt Heinfels"

parking:

Parkplatz Gemeindeamt Heinfels  
Tessenberg

starting point:

destination point:

best season:

Tessenberger See  
JAN, FEB, MAR, DEC

**Gpx file**

**Interactive map**

[download>](#)

[open>](#)

## Description

Follow the woodland trail to Tessenberger Alm (not open). Continue via the Alpine area enjoying the wonderful panorama view to Tessenberger See. Proceed back along the same route or head down to Außervillgraten (2 hours).