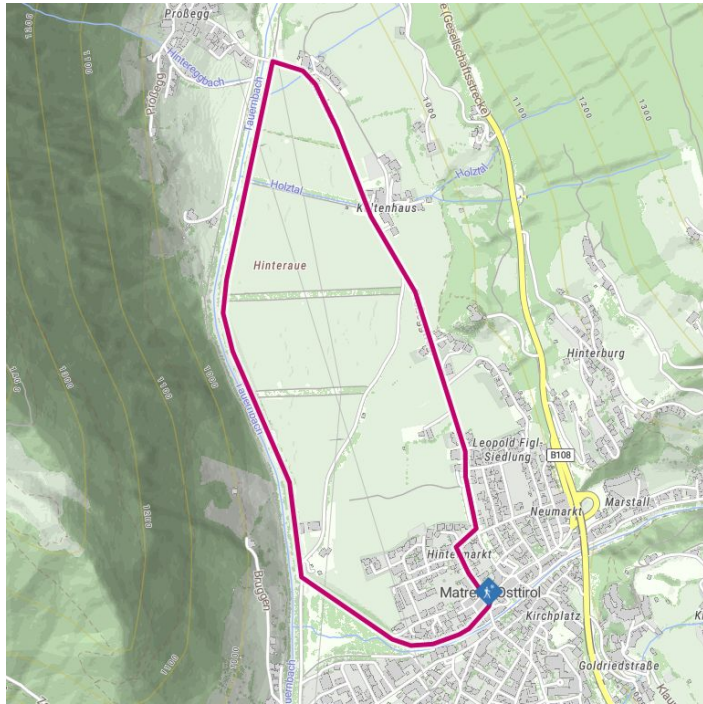
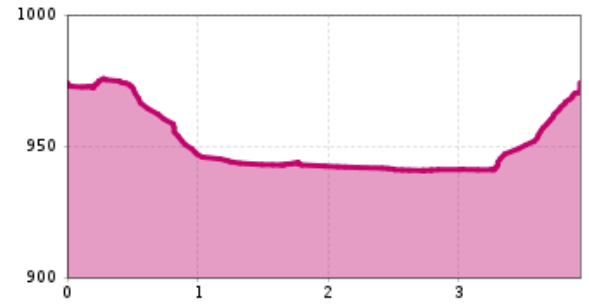


Winter hiking in the National Park Hohe Tauern



**Altitude profile**



## The most important at a glance

<b>distance</b> 3.9 km	<b>altitude meters uphill</b> 35 m	<b>altitude meters downhill</b> 35 m	<b>total walking time</b> 1:10 h
<b>highest point</b> 970 m	<b>difficulty</b> easy	<b>state:</b> closed	

**fitness:**

\* \* \* \* \*

**public transport:**

951 Matrei i.O. Korberplatz

**parking:**

Car park Korberplatz, Car park Kreuzbühel

**starting point:**

Tourist information Matrei i. O.

**destination point:**

Tourist information Matrei i. O.

**best season:**

JAN, FEB, MAR, DEC

**route typ:**

circuit family tour

## arrival

**Stop**

Matrei in Osttirol Korberplatz

**Parking spot**

Car park Korberplatz 960m

Car park Kreuzbühel 970m

## Gpx file

## Interactive map

[download>](#)

[open>](#)

## Description

The Hinterau circular hiking trail starts at the Matrei i. O. tourist information office and leads to the district of Prosegg. This extensive area is ideal for winter hiking with the family thanks to its flat, large fields. The striking rows of trees (popularly known as "wind belts") in this area protect the surrounding fields from the Tauern wind. The frozen Tauernbach stream reflects the glittering rays of the sun, and the gentle splashing of the water will help you relax.